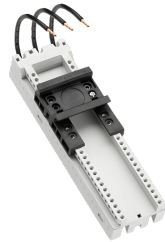


adapter 32 A (32684)



The picture may show a similar product.

Description

Part No.: **32684** 000A

EQUES[®] CrossBoard

adapter 32 A

1 adjustable mounting rail, with leads AWG 10 (6 mm²)

45 x 160

with CrossLink[®] interface

System

CrossBoard[®] 125A / 250A, CrossBoard[®] 800 A

Advantages of the product

Conductor ends ultrasonic compressed.

Click mechanism when pushing onto the CrossBoard[®].

Product group 05

Subgroup 21

pack size 1

EAN 4021267326845

ETIM 5.0 EC001531

ETIM 8.0 EC001531

Approvals

Standards

IEC 61439-1:2020

UL 508

Approvals

IEC (CB) , UL



for UL feeder circuits >250V

type number: EQ45-BC

UL file: E123577, UL category (for USA): NMTR <https://www.ul.com>

UL file: E123577, UL category (for Canada): NMTR7 <https://www.ul.com>

CCC approval: no certification required

Technical data

Details IEC

Standards

IEC 61439-1:2020

Electrical data IEC

rated current (IEC): 32 A

rated voltage (IEC) AC: 690 V

rated isolation voltage U_i AC: 800 V

rated surge voltage U_{imp} : 6 kV

power dissipation of the article:

The power dissipation at a typical load of 80 % results to 1.3 W.

(The power dissipation at full load would be 2.1 W.)

Details UL

Standards

UL 508

for UL feeder circuits >250V

Electrical data UL

rated current (UL): 30 A

rated voltage (UL) AC: 600 V

rated frequency (UL): 50 / 60 Hz

SCCR unprotected max.: 5 kA

3 cycles (without OPD) @ 600 V AC

SCCR protected max.: 65 kA

with any NKJH/7 Comb. Motor Controller 32 A / 480 V AC

Mechanical data

W x H x D: 45 x 160 x 45

weight: 15.6 kg/100

poles: 3-pole

Material properties

halogen-free: Yes

Application notes

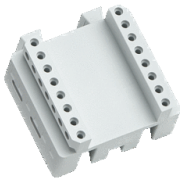
For compact mounting of complete motor circuits with commercially available switchgear and safe mechanical and electrical connection to the CrossBoard®.

the short-circuit capacity of the combination of adapter and motor starter depends on the motor starter

for UL feeder circuits >250V

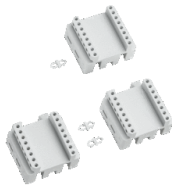
Accessories

accessories for mounting



32933 000A

extension module for direct starters
40 mm extension
for EQUES®CrossBoard adapters Comfort



32934 000A

extension set for reversing starters
40 mm extension
for EQUES®CrossBoard adapters Comfort

further accessories



32952 000A

positioning piece for Siemens S00 and S0
for 45mm wide adapters with adjustable mounting rails



32979 000A

positioning piece for Eaton PKZ
for 45mm wide adapters with adjustable mounting rails



32947 000

mounting rail 45 mm
for busbar adapters



32940 000A

mounting rail 54 mm
for busbar adapters

<https://pim.woehner.de/EN/EN/1000182097>